



DEA No. RA0571996  
FL License # CMTL-0003  
CLIA No. 10D1094068

## Certificate of Analysis

Compliance Test

**VIOLIN USA**  
226 W. LIVINGSTON ST  
MONTICELLO, IL 61856

Batch # T0422-02, T0422-04  
Batch Date: 2022-04-01  
Extracted From: N/A

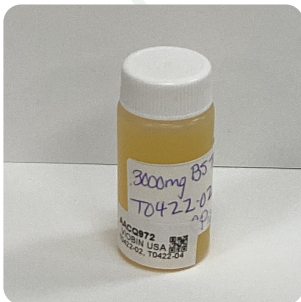
Test Reg State: Colorado

Order # VIO220401-020001  
Order Date: 2022-04-01  
Sample # AACQ972

Sampling Date: 2022-04-04  
Lab Batch Date: 2022-04-04  
Completion Date: 2022-04-06

Initial Gross Weight: 26.932 g

Number of Units: 1  
Net Weight per Unit: 28.240 g



Product Image



### Potency 10

Specimen Weight: 91.000 mg

Analyte	Dilution (1:n)	LOD (%)	LOQ (%)	Result (mg/g)	(%)
CBD	1000.000	0.000054	0.002	110.700	11.070
CBG	1000.000	0.000248	0.002	2.720	0.272
CBN	1000.000	0.000014	0.002	0.740	0.074
CBDV	1000.000	0.000065	0.002	0.470	0.047
CBC	1000.000	0.000018	0.002	<LOQ	<LOQ
THCA	1000.000	0.000032	0.002	<LOQ	<LOQ
Delta-9 THC	1000.000	0.000013	0.002	<LOQ	<LOQ
CBGA	1000.000	0.000008	0.002	<LOQ	<LOQ
CBDA	1000.000	0.000001	0.002	<LOQ	<LOQ
THCV	1000.000	0.000007	0.002	<LOQ	<LOQ

Tested  
(LCU)



### Potency Summary

Total THC None Detected	Total CBD 3,126.170mg
Total CBG 0.272% 76.810mg	Total CBN 0.074% 20.900mg
Other Cannabinoids 0.047% 13.270mg	Total Cannabinoids 11.463% 3,237.150mg

Xueli Gao  
Ph.D., DABT  
Lab Toxicologist

Aixia Sun  
D.H.Sc., M.Sc., B.Sc., MT (AAB)  
Lab Director/Principal Scientist



Definitions and Abbreviations used in this report: \*Total CBD = CBD + (CBD-A \* 0.877), \*Total CBDV = CBDV + (CBDVA \* 0.87), \*Total THC = THCA-A \* 0.877 + Delta 9 THC, \*Total THCV = THCV + (THCVA \* 0.87), \*CBG Total = (CBGA \* 0.877) + CBG, \*CBN Total = (CBNA \* 0.877) + CBN, \*Total CBC = CBC + (CBCA \* 0.877), \*Total THC-O-Acetate = Delta 8 THC-O-Acetate + Delta 9 THC-O-Acetate, \*Other Cannabinoids Total = Total Cannabinoids - All the listed cannabinoids on the summary section, \*Total Detected Cannabinoids = Delta6a10a-THC + Delta8-THC + Total CBN + CBT + Delta8-THCV + Total CBG + Total CBD + Total THCV + CBL + Total THC + Total CBC + Total CBDV + Delta10-THC + Total THC-O-Acetate, \*Analyte Details above show the Dry Weight Concentrations unless specified as 12% moisture concentration. (mg/ml) = Milligrams per Milliliter, LOQ = Limit of Quantitation, LOD = Limit of Detection, Dilution = Dilution Factor (ppb) = Parts per Billion, (%) = Percent, (cfu/g) = Colony Forming Unit per Gram (cfu/g) = Colony Forming Unit per Gram, , LOD = Limit of Detection, (µg/g) = Microgram per Gram (ppm) = Parts per Million, (ppm) = (µg/g), (aw) = aw (area ratio) = Area Ratio, (mg/Kg) = Milligram per Kilogram, \*Measurement of Uncertainty = +/- 10%

This report shall not be reproduced, without written approval, from ACS Laboratory. The results of this report relate only to the material or product analyzed. Test results are confidential unless explicitly waived otherwise. Accredited by a third-party accrediting body as a competent testing laboratory pursuant to ISO/IEC 17025 of the International Organization for Standardization.



## Certificate of Analysis

Compliance Test

**VIOBIN USA**  
226 W. LIVINGSTON ST  
MONTICELLO, IL 61856

Batch # T0422-02, T0422-04  
Batch Date: 2022-04-01  
Extracted From: N/A

Test Reg State: Colorado

Order # VIO220401-020001  
Order Date: 2022-04-01  
Sample # AACQ972

Sampling Date: 2022-04-04  
Lab Batch Date: 2022-04-04  
Completion Date: 2022-04-06

Initial Gross Weight: 26.932 g

Number of Units: 1  
Net Weight per Unit: 28.240 g



### Moisture

Specimen Weight: N/A Dilution Factor: 1.000

### Tested

(Moisture Meter)

Analyte	Action Limit (%)	Result (%)
Moisture	NA	3.330

Xueli Gao  
Ph.D., DABT  
Lab Toxicologist

Aixa Sun  
D.H.Sc., M.Sc., B.Sc., MT (AAB)  
Lab Director/Principal Scientist



Definitions and Abbreviations used in this report: \*Total CBD = CBD + (CBD-A \* 0.877), \*Total CBDV = CBDV + (CBDVA \* 0.87), \*Total THC = THCA-A \* 0.877 + Delta 9 THC, \*Total THCV = THCV + (THCVA \* 0.87), \*CBG Total = (CBGA \* 0.877) + CBG, \*CBN Total = (CBNA \* 0.877) + CBN, \*Total CBC = CBC + (CBCA \* 0.877), \*Total THC-O-Acetate = Delta 8 THC-O-Acetate + Delta 9 THC-O-Acetate, \*Other Cannabinoids Total = Total Cannabinoids - All the listed cannabinoids on the summary section, \*Total Detected Cannabinoids = Delta6a10a-THC + Delta8-THC + Total CBN + CBT + Delta8-THCV + Total CBG + Total CBD + Total THCV + CBL + Total THC + Total CBC + Total CBDV + Delta10-THC + Total THC-O-Acetate, \*Analyte Details above show the Dry Weight Concentrations unless specified as 12% moisture concentration. (mg/ml) = Milligrams per Milliliter, LOQ = Limit of Quantitation, LOD = Limit of Detection, Dilution = Dilution Factor (ppb) = Parts per Billion, (%) = Percent, (cfu/g) = Colony Forming Unit per Gram (cfu/g) = Colony Forming Unit per Gram, LOD = Limit of Detection, (µg/g) = Microgram per Gram (ppm) = Parts per Million, (ppm) = (µg/g), (aw) = aw (area ratio) = Area Ratio, (mg/Kg) = Milligram per Kilogram, \*Measurement of Uncertainty = +/- 10%

This report shall not be reproduced, without written approval, from ACS Laboratory. The results of this report relate only to the material or product analyzed. Test results are confidential unless explicitly waived otherwise. Accredited by a third-party accrediting body as a competent testing laboratory pursuant to ISO/IEC 17025 of the International Organization for Standardization.